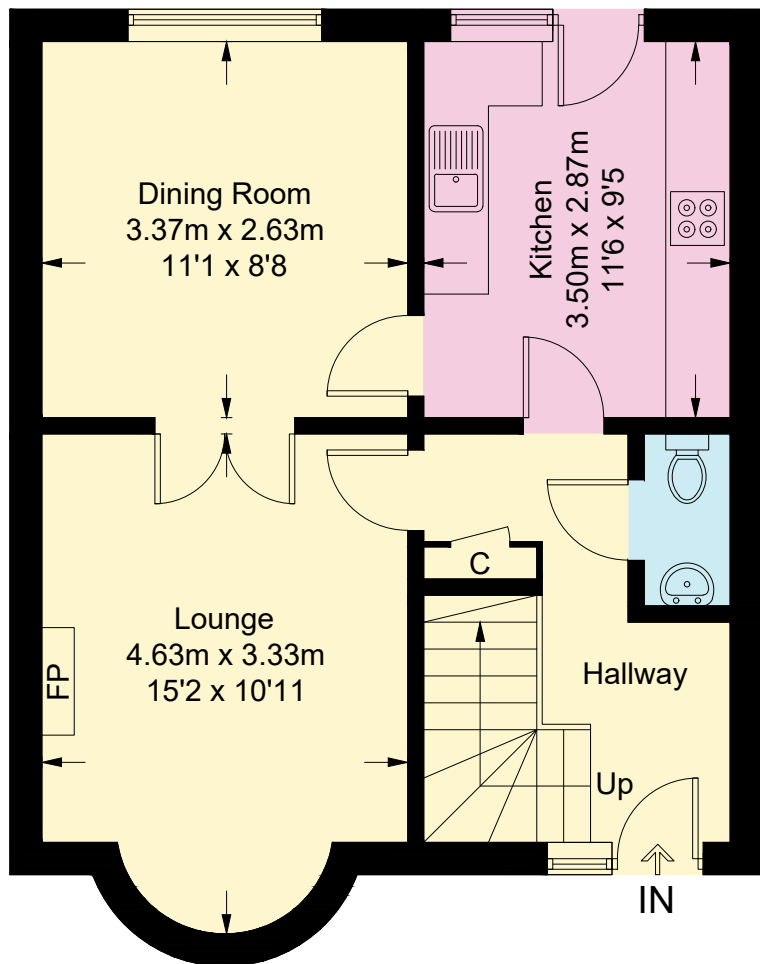


# 58 Birkdale Avenue, Colwyn Heights, LL29 6DB

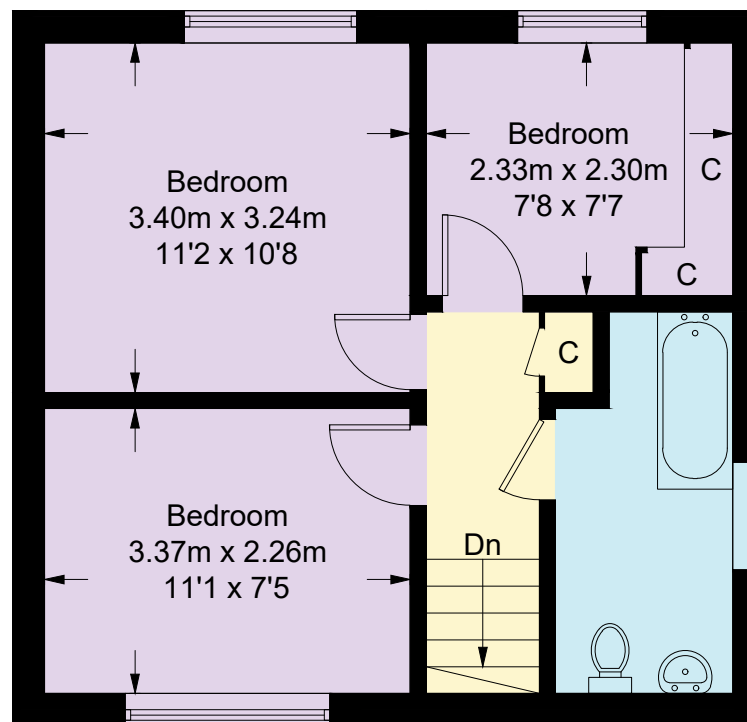
Approximate Gross Internal Area = 87.9 sq m / 946 sq ft

Garage = 13.4 sq m / 144 sq ft

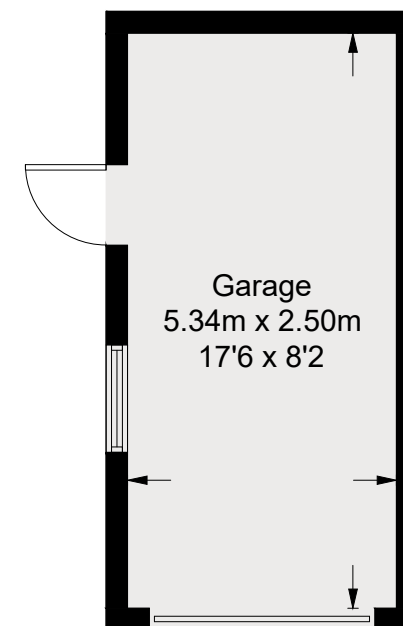
Total = 101.3 sq m / 1090 sq ft



**Ground Floor**



**First Floor**



(Not Shown In Actual  
Location / Orientation)

This plan is for layout guidance only. Not drawn to scale unless stated. Windows and door openings are approximate. Whilst every care is taken in the preparation of this plan, please check all dimensions, shapes and compass bearings before making any decisions reliant upon them.

Fourlabs.co © 2025 (ID1257097)